

# POTATO VARIETY CATALOGUE 2019





## GUIDELINES FOR MONITORING QUALITY OF CERTIFIED SEED POTATO



Potato yields are affected by several factors of which the most important one is the quality of seed used. The average yield increase from the use of good quality seed ranges from 30 to 50 per cent compared to farmers who use recycled seeds. Farmers face challenges getting certified seed potato since seed production has remained low at less than four per cent of the national requirement. Low seed production is due to challenges such as few numbers of certified seed multipliers and the cost involved in multiplying. However, demand for certified seed potato is growing with increasing awareness on the importance of using certified seeds.

To guarantee the quality of the seeds, potato farmers are encouraged to check the quality of

certified seed before they purchase from a registered seed merchant. The seed potato packaging bag must have a KEPHIS label inside with the following information:

- Name of the potato variety e.g. Shangi, Unica, Sherekea, Asante etc.
- Seed size e.g. size I, size II, or mini-tubers
- Net weight (the weight should not exceed 50 Kg) e.g. 20 Kg, 50kg
- Certified seed generation e.g. BASIC, C1G, C2G etc.
- Lot number e.g. 17-17344H
- Date of sealing e.g. 10/23/2017
- Label colour: Breeder's/ Basic (White), C1G (Blue), C2G-C3G (Pink)
- The label should look like the sample below:

KENYA PLANT HEALTH INSPECTORATE SERVICE (KEPHIS)	Species	SOLANUM TUBEROSUM	
	Aina Variety	Kenya Sherekea	Size II
	Kundi Category	Mbegu Zilizotibitishwa Certified seed 2ND GEN	
	Naamba ya lot Lot Number	18-19-2051-09c	
	Tarehe ya mukururi Date of Sealing	4/2/2019 12: Kg:	50.00
	Mukuza Kenya Grown in Kenya	No. 10656230	

## Farmers are also advised to observe the following:

1. Purchase seed potato from registered seed producers only; You can confirm with KEPHIS or NPCK through the contacts provided below.
  2. Do not buy certified seed which has no KEPHIS label stitched to the package or inserted inside the bag.
  3. Obtain an official receipt on purchase of seed.
  4. Keep the receipts and the certification label throughout the growing season for reference in case of complaints. Keep all useful evidence such as seed potato packaging, receipts, label etc.
  5. Do not plant seed tubers that are rotten, over sprouted, damaged or mis-shapened.
  6. Report any strange diseases, pests or any other anomaly found on certified seed potato to KEPHIS, NPCK or agricultural extension officers for mitigation/ management action
    - a. The reporting should be done immediately the anomaly is discovered and should be within the growing season and affected tubers or anomaly should be preserved as evidence.
    - b. Do not tamper with any information on the label or interfere with the package.
- In case of any complaints on seed quality, farmers should contact KEPHIS and NPCK immediately on the following telephone numbers or email:

KEPHIS HQ - Tel: 0709 891 000,

Email: [director@kephis.org](mailto:director@kephis.org),  
[kephisinfo@kephis.org](mailto:kephisinfo@kephis.org)

KEPHIS Regional Offices:

- Kitale - 0722 209 502
- Nakuru - 0722 209 503
- Embu - 0728 600 092
- Mombasa - 0722 209 501
- Kisumu - 0728 607 093

NPCK - Tel: 0799 739 578

Email: [complaints@npck.org](mailto:complaints@npck.org)

## TABLE OF CONTENT

FOREWORD	6
KEY PARTNERS	7
NATIONAL POTATO COUNCIL OF KENYA	9
ECOLOGICAL REQUIREMENTS	9
DEFINITION OF WORDS	10
VARIETY CHARACTERISTICS	14
GUIDELINES FOR MONITORING QUALITY OF CERTIFIED SEED POTATO	15
ACOUSTIC	16
ANNET	17
ARIZONA	18
ARNOVA	19
ASANTE	20
CAROLUS	21
CARUSO	22
CHALLENGER	23
CHULU	24
CONNECT	25
DERBY	26
DESIREE	27
DESTINY	28
DUTCH ROBIJN	29
EL-MUNDO	30
EVORA	31
FALUKA	32
FARIDA	33
JELLY	34
KENYA BARAKA	35
KENYA KARIBU	36
KENYA MAVUNO	37
KENYA MPYA	38
KENYA SIFA	39
KERR'S PINK	40
KONJO	41
KURODA	42



LADY AMARILLA	43
LADY TERRA	44
LAURA	45
LENANA	46
MANITOU	47
MARKIES	48
MAYAN GOLD	49
MILVA	50
MUSICA	51
NYOTA	52
PANAMERA	53
PURPLE GOLD	54
RODEO	55
ROCK	56
ROYAL	57
RUMBA	58
RUDOLPH	59
SAGITTA	60
SARPO MIRA	61
SHANGI	62
SHEREKEA	63
SIFRA	64
TAURUS	65
TIGONI	66
UNICA	67
VOYAGER	68
WANJIKU	69
ZAFIRA	70
ZARINA	71
OTHER VARIETIES	72

## LIST OF TABLES

Table 1: Summary of the major attributes	12
Table 2: Seed Potato producers and varieties	14

## FOREWORD

This potato catalogue is the fourth after the 2013, 2015 and 2017 Editions. The 2019 edition has 4 new varieties that were released after the 2017 edition. It also has an updated list of certified seed merchants.

The Potato Variety catalogue describes potato varieties in terms of variety use, tuber features, maturity period, yields, and disease and pest resistance. A brief description of the growth characteristics has also been provided. Using the details provided, it is easy to identify each variety targeting specific market. It also has the names and contacts of seed potato merchants and out growers, which helps farmers, know where to source seed potato.

This is an initiative aimed at enhancing awareness about the released varieties and helping create linkages between the seed growers and ware potato farmers. The Potato Variety Catalogue is therefore, an important reference material for farmers and other market players.

It is expected that potato industry will highly benefit from the condensed variety information, helping improve access to high quality-disease free seed potato. This will help enhance productivity, profitability, and market competitiveness of the subsector, in line with the UN Sustainable Development Goals (SDGs), Vision 2030 and Agriculture Transformation, and Growth strategy (ATGS) (2009-2020).

The development and distribution of this catalogue could not have been possible without the financial and technical support from our partners who include: Ministry of Agriculture, Livestock, Fisheries & Irrigation, German Cooperation (GIZ), Kenya-Netherlands Seed Potato Development Project, Kenya Agricultural and Livestock Research Organization (KALRO NPRC), Kenya Plant Health Inspectorate Service, (KEPHIS), International Potato Center (CIP), International Fertilizer Development Center (IFDC), Syngenta Foundation and Feed the Future Kenya Accelerated Value Chain Development (AVCD) project, funded by USAID.

**Wachira Kaguongo**  
*Chief Executive Officer,*  
*National Potato Council of Kenya*

# KEY PARTNERS



**Republic of Kenya**  
Ministry of Agriculture, Livestock and Fisheries



german  
cooperation  
DEUTSCHE ZUSAMMENARBEIT

Implemented by

**giz**

Deutsche Gesellschaft  
für Internationale  
Zusammenarbeit (GIZ) GmbH



Kingdom of the Netherlands



**CIP**  
INTERNATIONAL  
POTATO CENTER

A CGIAR RESEARCH CENTER



**NATIONAL  
RESEARCH  
FUND**



**syngenta** foundation  
for sustainable  
agriculture







Say  
growth,  
say **Agrico.**



## AGRICO EAST AFRICA OFFERS HIGH QUALITY SEED POTATOES

Agrico East Africa has 13 approved varieties in the Kenyan market, all high-quality high yielding seed potato varieties originating from The Netherlands. A selection of our top-performers in Kenya:

	Variety	Maturing	Main Characteristics
	<b>Destiny</b>	Early (±90 days)	<ul style="list-style-type: none"> <li>*Early main or second season crop, suitable as a crisping / ware variety.</li> <li>*Good yield and good heat tolerance</li> <li>*High number of round tubers with yellow skin and shallow red eyes</li> <li>*High dry matter content (23.7%) and suitable for processing</li> </ul>
	<b>Manitou</b>	Medium (±100 days)	<ul style="list-style-type: none"> <li>*Maincrop ware variety with an attractive red skin</li> <li>*High yield and very suitable for home fries or table</li> <li>*Large oval tuber with shallow eyes</li> <li>*Good heat tolerance</li> </ul>
	<b>Markies</b>	Late (±110 days)	<ul style="list-style-type: none"> <li>*High-yielding all-round late maincrop variety</li> <li>*Good for fresh French fries (chips), crisping, or fresh consumption</li> <li>*Large yellow uniform-sized oval tubers with shallow eyes</li> <li>*Good late blight and virus resistance</li> </ul>
	<b>Rudolph</b>	Medium (±95 days)	<ul style="list-style-type: none"> <li>*A maincrop ware variety with attractive red skin and a very high yield</li> <li>*Good heat tolerance</li> <li>*Suitable for long-term storage</li> <li>*Nice table variety</li> </ul>

### Agrico East Africa

Contact us on: [info@agrico.co.ke](mailto:info@agrico.co.ke), [www.agrico.nl](http://www.agrico.nl)

Tel: +254 722 206 179 (Nairobi) or +254 741 788 380 (Nakuru)

Offices at Baba Dogo Road, Ruaraka, Nairobi & farm in Menengai, Nakuru

Follow us: [www.facebook.com/AgricoEA](https://www.facebook.com/AgricoEA)





## **NATIONAL POTATO COUNCIL OF KENYA**

The National Potato Council of Kenya (NPCK) is a Public Private Partnership (PPP) and a multi-stakeholder organization whose responsibility is to help plan, organize, and co-ordinate potato value chain activities and develop the subsector into a robust, competitive, and self-regulating industry. The Potato Council organizational structure enables it to draw synergies from a wide membership, representing all stakeholders and actors in the potato industry.

### **NPCK VISION STATEMENT**

Potato industry is a leading contributor to increased incomes, food security, and improved welfare in Kenya

### **NPCK MISSION STATEMENT**

Coordinate potato sub-sector stakeholders towards development of potato industry's profitability and livelihoods improvement.

### **NPCK OBJECTIVES**

The NPCK Strategic Plan is anchored on six objectives:

1. To contribute in creating an enabling environment for effective and efficient potato value chains for growth and development of a self-regulating potato industry.
2. To help build a cohesive potato industry in order to promote synergies and minimize duplication for efficient use of resources through enhanced public private partnership
3. To promote best practices for quality standards, improved yields and enhanced value addition in order to thrive in local, regional, and global markets.
4. To create a platform for information management and capacity building for the various potato value chain actors.
5. To mobilize and effectively manage resources for the growth and stability of the organization and prosperity of the industry.
6. To identify and mainstream crosscutting and emerging issues within the potato industry.

## NPCK SERVICES

1. Collect, process and disseminate subsector information.
2. Provide an avenue for creating awareness about partners' products and services through NPCK website and publications.
3. Offer a platform for networking and business engagements through annual National Potato Conference and trade fair, County trade fairs in potato producing zones, and bi annual stakeholders meetings.
4. Facilitate development of standardized branded seed and ware potato packaging bags for use by farmers and traders for quality adherence.
5. Facilitate market linkages between Potato farmers and the market outlets and between seed producers and ware potato farmers.
6. Inform policy formulation for the subsector, promote adherence to regulations and adoption of good agricultural practices.
7. Lobby and advocacy for supportive policy and legal framework.
8. Consultancy services along the potato value chain.
9. Training and capacity building of farmers, farmer cooperatives and farmer associations.
10. Act as a National platform for planning, organizing, and coordination of all subsector activities.

## NPCK MEMBERSHIP

NPCK draws synergies from a wide membership representing all stakeholders and actors in the industry who include: Farmers, Researchers (National and international), Public institutions, Extension providers, seed producers, Traders, Processors, Regulatory agencies, Financial service providers, input providers, Ministry of Agriculture for National and County governments, Development partners and other actors and players.

NPCK has three Membership categories; Gold, Silver and Bronze that allows engagement, services and benefits at different levels.

For more details about membership, please follow the link: **[www.npck.org](http://www.npck.org)**

## ECOLOGICAL REQUIREMENTS

**Potato growing areas:** There are 13 major potato-producing counties which are: Meru, Nyeri, Nyandarua, Kiambu, Taita-Taveta, Nakuru, Narok, Bomet, Elgeyo-Marakwet, Trans-Nzoia, Bungoma, Uasin-Gishu and West Pokot; Other potato producing counties include Kisii, Nyamira, Kirinyaga, Muranga, Baringo, Nandi, Laikipia and Kericho. Other upcoming potential potato producing counties (mainly in the hilly masses) include Machakos, Makueni, Embu, Kajiado, Tharaka Nithi, Samburu, Kwale and Nairobi

**Altitude:** Traditionally grown between 1500 to 3000 Metres Above Sea Level (M.A.S.L). However, some new varieties can still do well in altitude below 1500 M.A.S.L.

**Soil types:** Ideal soils for potato production vary within the counties but usually loam soils (silt loam; clay loam with adequate organic content, well-draining to light soils) are suitable. Suitable soil pH ranges from 5.5-7.0. Ideal soil pH 5.5

**Temperature:** Mean daily temperature range from 15-24(°C)

**Annual rainfall:** Mean Rainfall (mm) 1200-1800mm

## DEFINITION OF TERMS

1. **Intensive Management-** the crop has been grown using high quality seed, has adequate water and nutrients and has grown under good agronomical practices
2. **Conventional Management-** The crop has been grown under farmer growing management practices
3. **Table Variety-** Can be used for mashing, roasting, boiling, baking and stew

## VARIETY CHARACTERISTICS

The following agricultural characteristics are specified for each variety:

- Use
- Areas to be grown
- Maturity
- Yield Potential
- Tubers features
- Tuber dormancy
- Dry Matter Content
- Plant description
- Disease resistance/Tolerance

**Table 1: Summary of the major attributes**

VARIETY	USAGE			ALTITUDE RANGE	MATURITY	YIELD POTENTIAL	TUBER CHARACTERISTICS			TUBER DORMANCY	DISEASE RESISTANCE/ TOLERANCE/ SUSCEPTIBILITY		
	CRISPS	CHIPS	TABLE				SKIN COLOUR	EYE DEPTH	FLESH COLOUR		L. BLIGHT	PVY	PLRV
ACOUSTIC		•	•	1300-3000	••	↖↖↖	L.Y	S	L.Y	★★	✓✓✓	INA	INA
ANNET		•	•	1300-2000	•	↖↖	Yrb	D	Y	★★★	✓✓✓	INA	INA
ARIZONA		•	•	1300-2000	••	↖↖↖	Y	S	Y	★★	✓✓	✓✓	✓✓
ARNOVA		•	•	1300-3000	••	↖↖↖	Y	S	P.Y	★★★	✓✓	✓✓	✓✓
ASANTE			•	≥ 2300	••	↖↖	P	M	P.Y	★★★	✓	INA	✓✓✓
CAROLUS		•	•	1300-3000	••	↖↖↖	R	S	L.Y	★★★	✓✓✓	✓✓	✓✓
CARUSO	•	•		1300-3000	••	↖	Y	S	L.Y	★★	✓✓✓	✓✓✓	✓✓✓
CHALLENGER		•	•	1300-3000	•••	↖↖↖	Y	S	L.Y	★★	✓✓	INA	INA
CHULU	•	•	•	1500-3500	••	↖↖↖	W.C	S	C	★★★	✓✓✓	INA	INA
CONNECT		•	•	1300-3000	••	↖↖↖	Y	S	Y	★★★	✓✓✓	✓✓✓	✓✓✓
DERBY	•	•	•	1300-3000	••	↖↖↖	Y	M	L.Y	★	✓✓	INA	INA
DESIREE		•	•	1800-2600	••	↖↖	R	M	L.Y	★★	INA	✓✓	INA
DESTINY	•	•		1500-3000	•	↖↖	Y	S	Y	★★	INA	✓✓	INA
DUTCH ROBIJN	•			1800-2600	••	↖	R	M	P.Y	★★★	✓✓	INA	INA
EL-MUNDO			•	1300-3000	•••	↖↖↖	Y	S	L.Y	★★★	✓✓	✓✓✓	INA
EVORA			•	1300-3000	••	↖↖↖	L.Y	M	C	★★★	✓✓	INA	INA
FALUKA			•	1300-3000	•	↖↖↖	Y	S	C	★★	✓✓✓	✓✓	INA
FARIDA		•	•	1300-3000	••	↖↖↖	INA	INA	Y	★★	✓✓	INA	INA
JELLY		•	•	1300-3000	•••	↖↖↖	Y	S	Y	★★★	✓✓✓	✓✓✓	INA
KENYA BARAKA		•	•	1600-2700	••	↖↖	W	S	W	★★★	✓✓✓	INA	INA
KENYA KARIBU	•		•	1800-2800	••	↖↖	R	D	Y	★★★	✓✓✓	✓✓✓	✓✓✓
KENYA MAVUNO	•	•	•	1800-2800	•••	↖↖	C	S	C	★★★	✓✓✓	✓✓✓	✓✓✓
KENYA MPYA		•	•	1400-3000	••	↖↖	C	S	C	★★★	✓✓✓	INA	INA
KENYA SIFA		•	•	1800-2800	••	↖	P	M	C	★★★	✓✓✓	✓✓✓	✓✓✓
KERR'S PINK	•	•	•	1400-2700	•	↖	P	D	C	★★★	✓✓✓	INA	INA
KONJO	•	•	•	1600-3500	••	↖↖↖	W	D	C	★★★	✓✓✓	✓✓	✓✓✓
KURODA		•	•	1300-3000	••	↖↖↖	R	S	L.Y	★★★	✓✓✓	✓✓	INA
LADY AMARILLA	•	•	•	1300-3000	••	↖↖↖	Y	S	D.Y	★★★	✓✓✓	✓✓	INA
LADY TERRA		•	•	1400-3000	•••	↖↖↖	Y	S	L.Y	★★★	INA	INA	✓✓
LAURA		•	•	1300-3000	••	↖↖↖	R	S	D.Y	★★★	✓✓	✓✓✓	✓✓✓
LENANA		•	•	1500-3500	••	↖↖↖	W.C	S	C	★★★	✓✓✓	INA	✓✓✓
MANITOU		•	•	1300-3000	••	↖↖↖	R	S	P.Y	★★	✓✓	✓✓	INA
MARKIES	•	•		1300-3000	••	↖↖↖	W	S	C	★★★	✓✓	✓✓	✓✓
MAYAN GOLD		•	•	1300-3000	••	↖	Y	M	Y	★★★	✓✓	✓✓	✓✓
MILVA			•	1300-3000	••	↖↖↖	Y	S	Y	★★★	✓✓✓	INA	✓✓
MUSICA		•	•	1300-3000	•••	↖↖↖	Y	S	D.Y	★	✓✓✓	✓✓	INA
NYOTA			•	1500-3500	•••	↖↖↖	W.C	S	C	★★★	✓✓✓	INA	INA
PANAMERA			•	1300-3000	•••	↖↖↖	Y	S	L.Y	★★	✓✓	INA	INA
PURPLE GOLD	•			1800-3000	••	↖	D.P	M	W	★★★	✓✓	INA	✓✓
RODEO			•	1800-3000	•••	↖↖↖	R	S	Y	★★	✓✓	INA	INA
ROCK	•	•		1400-3000	••	↖↖↖	Y	S	L.Y	★★★	INA	INA	✓✓
ROYAL	•	•	•	1300-3000	••	↖↖↖	Y	S	P.Y	★★	✓✓	INA	INA



**Table 1: Summary of the major attributes (Continuation)**

VARIETY	USAGE			ALTITUDE RANGE	MATURITY	YIELD POTENTIAL	TUBER CHARACTERISTICS			TUBER DORMANCY	DISEASE RESISTANCE/ TOLERANCE/ SUSCEPTIBILITY		
	CRISPS	CHIPS	TABLE				SKIN COLOUR	EYE DEPTH	FLESH COLOUR		L. BLIGHT	PVY	PLRV
RUMBA	•			1300-3000	••	↖↖↖	Y	S	L.Y	★★★	✓✓✓	✓✓✓	✓✓✓
RUDOLPH	•	•	•	1300-3000	••	↖↖↖	R	S	W	★★★	✓✓	✓✓✓	INA
SAGITTA	•	•	•	1300-3000	••	↖↖↖	Y	S	L.Y	★★	✓✓	✓✓✓	INA
SARPO MIRA		•	•	1300-3000	••	↖↖↖	R	S	P.Y	★★	✓✓✓	✓✓✓	✓✓✓
SHANGI		•	•	≥1500	•	↖↖	C	D	W	★	✓✓	INA	INA
SHEREKEA	•	•	•	1800-3000	••	↖↖↖	R	D	C	★★★	✓✓✓	✓✓✓	✓✓✓
SIFRA			•	1800-3000	•••	↖↖↖	L.Y	S	C	★★	✓✓	INA	INA
TAURUS	•			1300-3000	••	↖↖	Y	M	P.Y	★★★	✓✓	✓✓✓	INA
TIGONI		•	•	1800-2600	••	↖↖	W	S	P.Y	★★★	✓✓	INA	INA
UNICA	•	•	•	1400-3500	••	↖↖↖	R	S	C	★★★	✓✓	INA	✓✓✓
VOYAGER		•	•	1300-3000	•••	↖↖↖	Y	S	Y	★★★	✓✓	INA	INA
WANJIKU		•	•	1500-3500	••	↖↖↖	W.C	S	C	★★★	✓✓✓	✓✓✓	INA
ZAFIRA			•	1500-3500	•••		Y	S	L.Y	★★★	✓✓	✓✓	✓✓
ZARINA			•	1300-3000	•••	↖↖↖	Y	S	L.Y	★★	✓✓✓	INA	✓✓

## Key

TERM	Maturity	Disease Resistance, Tolerance & Susceptibility levels	Disease attributes	Tuber Dormancy	Yield Potential	Eye Depth	Tuber and Flesh Color																									
DEFINITION OF TERMS	Early(<3months)	Medium(3-4 months)	Late(>4 months)	Low	Medium	High	Information Not Available	Tolerant	Resistant	Susceptible	Short(<1 Month)	Medium(1-2 Months)	Long(>2 Months)	High(> 40 Tons/Ha or >16.9 tons /acre)	Medium (30-40 Tons/Ha or 12.15-16.9 tons/acre)	Low(< 30Tons/Ha or <12.15 tons/acre)	Shallow	Medium	Deep	Cream	Cream White	Red	Dark Red	Purple	Dark Purple	White	Yellow	Pale Yellow	Light Yellow	Yellow (red blotched)	White Cream	Deep Yellow
SYMBOLS AS USED	•	••	•••	✓	✓✓	✓✓✓	INA	██	███	███	★	★★	★★★	↖↖↖	↖↖	↖	S	M	D	C	CW	R	DR	P	DP	W	Y	PY	LY	Yrb	W.C	DY

## Note:

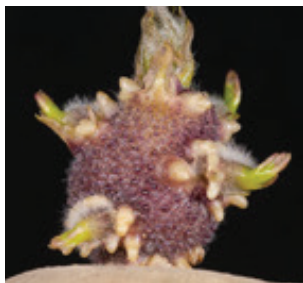
1. All varieties are susceptible to Bacterial Wilt (*Ralstonia Solanacearum*)
2. Indications for attributes are based on trials in the country of origin. However, In Kenya, performance trials have been done under both intensive and conventional management. Also not all varieties perform equally and performance may vary in different Counties; hence, farmers need to try small units before full production of any new variety

# Table 2: Seed Potato producers and varieties

	Name	Country/County	Contacts	Varieties
1	ADC-Molo	Nakuru	0721-202565 Judith, <a href="mailto:adcmolo@gmail.com">adcmolo@gmail.com</a>	Shangi, Sherekea, Dutch Robijn, Kenya Karibu, Kenya Mpya, Bvumbwe, Asante, Desiree, Kenya Mavuno, Rolin Tana, Kenya Sifa, Tigoni,
2	Aberdare Technology Limited	Muranga	0716177086	Shangi, Dutch Robijn, Unica, Asante, Kenya Karibu
3	Agrico East Africa	Nakuru	0722-206179- Amina or 0741788380- Josphat or <a href="mailto:info@agrico.co.ke">info@agrico.co.ke</a>	Markies, Destiny, Manitou, Rudolph, Arizona, Arnova, Carolus, Faluka, Zafira, Kuroda
4	Baraka Agricultural College	Nakuru-Molo	0724-775769- Majanga	Shangi
5	Benjamin Cheruiyot	Uasin-Gishu	0726-619426	Dutch Robijn
6	Charvi Investment/EuroPlant Aardappel B.V	Nakuru- Mau Narok	0724-739739 Jajpal <a href="mailto:Tejpal.singh@xflora.net">Tejpal.singh@xflora.net</a>	Shangi, Dutch Robijn, Jelly, Rumba, Milva, Laura
7	Clabham Investment limited - Frontier farm	Nakuru	0710607935 Boniface, <a href="mailto:bonifacetoday@yahoo.com">bonifacetoday@yahoo.com</a>	Shangi, Dutch Robijn
8	Den Hartigh	The Netherlands	<a href="mailto:Br.Krijger@denhartigh-potato.nl">Br.Krijger@denhartigh-potato.nl</a>	Connect, Caruso
9	Gene Biotech seeds LTD	Kajiado	0739-532993-Nayaranani, <a href="mailto:narayanimanatan@yahoo.com">narayanimanatan@yahoo.com</a>	Shangi
10	GTIL (Apical cuttings and minitubers only)	Nairobi	0722-662037 <a href="mailto:kae@africaonline.co.ke">kae@africaonline.co.ke</a>	Dutch Robijn, Shangi and Konjo
11	Grace Rono	Trans-Nzoia	0722-460326	Shangi
12	IPM & Kevian Kenya seeds (Kirinyaga seeds)	Kiambu	0705-729755-Koome <a href="mailto:info@keviankenya.com">info@keviankenya.com</a>	Shangi, Unica and Dutch Robijn
13	Julius Kandie	Trans-Nzoia	0720-874575	Dutch Robijn
14	KALRO-Tigoni	Kiambu	0727031783/0735458481 <a href="mailto:kalro.tigoni@kalro.org">kalro.tigoni@kalro.org</a>	Shangi, Tigoni, Unica, Kenya Karibu, Sherekea, Kenya Mavuno, Wanjiku, Nyota, Lenana, Annet, Chulu, Dutch Robijn and Kenya Mpya
15	Kenya Highland Seeds (Royal seed)/Danespo	Nairobi	0706 825555 - Peter <a href="mailto:Peter.francombe@khs.co.ke">Peter.francombe@khs.co.ke</a>	Royal, Sarpo Mira

# Table 2: Seed Potato producers and varieties (continuation)

16	Kisima Farm	Meru	0716968766/0722509830- Abuid Saidi potatoes@kisima.co.ke	Tigoni, Asante, Sherekea, Kenya Mpya, Shangi, Dutch Robijn, Unica, Farida, Derby, Sagitta, Taurus, Challenger, Evora, Panamera, Rodeo, Sifra, Voyager, Zarina
17	Leah Rono	Nandi	0727566988	Dutch Robijn
18	Savannah Fresh Hort. Farmers' Cooperative Society Ltd	Meru	0708347959- Patrick	Asante, Sherekea, Unica, Dutch Robijn and Konjo
19	Seeds2B Africa Ltd	Meru	james.wathiru@syngenta.com	Shangi
20	Sigen Hortipruse Ltd	Elgeyo Marakwet	Isaac Letting 0728621222	Shangi, Dutch Robijn
21	Singus Enterprises	Nakuru- Molo	Ann Mbugua 0722691245 annickoimbori@gmail.com	Shangi, Dutch Robijn, Unica
22	Spring valley (Moiben)	Uasin Gishu	0723916161-Samson Chebutuk	Shangi, Dutch Robijn,
23	Stockman Rozen Ltd	Naivasha	0720-603990 info@srk.co.ke	Apical stem cuttings and mini- tubers of Shangi, Unica, Konjo, Dutch Robijn, Wanjiku, Asante
24	Starlight Cooperative society	Nakuru- Molo	0721109200	Shangi and Sherekea
25	Stet Holland B.V	The Netherlands	Holtslaghenk- Henk.Holtslag@stet-potato.com	Elmundo
26	Suera Farm/C. Meijer B.V	Nyandarua	0706-186579 Suera.flowers@gmail.com	Musica, Lady Amarilla, Acoustic, Lady Terra, Rock
27	Wanfa Technologies	Nyandarua	Teresia Mbeere 727622385 tmbeere@yahoo.com	Shangi, Unica



<b>Use:</b>	Table variety firm cooking and excellent taste
<b>Areas to be grown:</b>	Suitable for all growing regions
<b>Maturity:</b>	Medium (3-4 months)
<b>Yield Potential:</b>	High (>40 tons/ha or 16.19 tons/acre) under intensive management
<b>Tuber features:</b>	Round oval tubers with good bruising resistance Uniform in grading Light yellow skin Shallow eyes Light yellow flesh
<b>Tuber dormancy:</b>	Medium (1-2 Months)
<b>Dry Matter:</b>	18%
<b>Plant description:</b>	Acoustic is in height a medium variety with Spreading stems, not totally covered foliage. Leaves are light green in color. It exhibits presence of lightly flowering pink to light purple flowers.
<b>Disease Resistance/ Tolerance:</b>	Acoustic has very high <i>phytophthora infestans</i> resistance medium resistance to PCN (Ro1and Ro 2/3) and high resistance to wart disease.
<b>Seed producer:</b>	Suera Farm/C. Meijer B.V





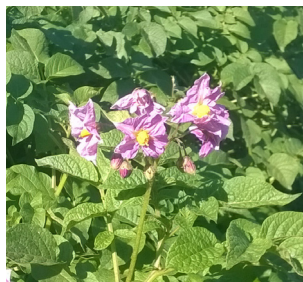
<b>Use:</b>	Chips, Table
<b>Areas to be grown:</b>	Medium to high altitude of 1300-2000 M.A.S.L. It does well in areas such as Nyandarua, Kiambu, Nyeri, Laikipia, Meru, Nakuru, Bomet, Narok, Kwale, Nandi, Kisii, Kericho, Elgeyo Marakwet, Uasin Gishu, Trans-Nzoia, West Pokot, Taita-Taveta and Cherangani hills.
<b>Maturity:</b>	Early ( $\leq 3$ months)
<b>Yield Potential:</b>	Medium (30-35 tons/ha or 12.14-14.16 tons/acre)
<b>Tuber features:</b>	Round shaped Deep eyes Smooth yellow skin (red blotched) Yellow flesh
<b>Tuber dormancy:</b>	Long ( $>2$ Months)
<b>Dry Matter:</b>	Information Not Available (I.N.A)
<b>Plant Description:</b>	Annet is a semi erect tall variety (about 1 meter in height) with strong stems and light green medium sized leaves. It flowers moderately and the flowers are white.
<b>Disease resistance/ Tolerance:</b>	Annet is tolerant to Late blight
<b>Seed producer:</b>	KALRO Tigoni



<b>Use:</b>	Chips, Table
<b>Areas to be grown:</b>	Suitable for all potato-growing areas and can also grow in altitude of 1300- 3000
<b>Maturity:</b>	Early (3months)
<b>Yield Potential:</b>	High (>40 tons/ha or >16.19tons/acre)
<b>Tubers features:</b>	Large, oval tubers Yellow skin Light yellow flesh Shallow eyes
<b>Tuber dormancy:</b>	Medium (1-2 Months)
<b>Dry matter:</b>	16.8%
<b>Plant description:</b>	Arizona exhibits good initial development It produces white flowers. It is high yielding and should not be stored for too long before planting
<b>Disease resistance/ Tolerance:</b>	Arizona has good resistance to Late blight and Viruses
<b>Seed producer:</b>	Agrico East Africa



<b>Use:</b>	Chips, Table variety
	Firm in cooking. No traces of after cooking blackening
<b>Areas to be grown:</b>	Suitable for all potato-growing areas
<b>Maturity:</b>	Early (3 months)
<b>Yield Potential:</b>	High (>40 tons/ha or >16.19 tons/acre)
<b>Tubers features:</b>	<p>Very large to large oval tubers</p> <p>Yellow, smooth to medium smooth skin</p> <p>Light yellow flesh</p> <p>Shallow eyes</p> <p>Good resistance to internal bruising</p> <p>Rather sensitive to harvest damage, needs some hardening. Less sensitive to bruising.</p>
<b>Tuber dormancy:</b>	Medium (1-2 Months)
<b>Dry matter:</b>	18.2%
<b>Plant description:</b>	Arnova is a tall variety with semi-erect stems and medium to large light green leaves. It flowers profusely and the flowers are white. It has good heat tolerance.
<b>Disease resistance/ Tolerance:</b>	Arnova is susceptible to Leaf blight and susceptible to Virus A, It is moderately resistant to Tuber blight, Virus Y <sup>n</sup> , Potato Virus X, Common scab, Powdery scab and Y <sup>ntn</sup> Virus. It has good resistance to Leaf Roll and is resistant to Ro1 of the Potato Cyst Nematode
<b>Seed producer:</b>	Agrico East Africa



<b>Use:</b>	Table variety
<b>Areas to be grown:</b>	For all regions suitable for potato production
<b>Maturity:</b>	Medium (3-4months)
<b>Yield Potential:</b>	Medium to High (35-45 t/ha or 14.16-18.23 tons/acre)
<b>Tuber features:</b>	Round shaped Medium eyes Smooth Pink skin Pale yellow flesh
<b>Tuber dormancy:</b>	Long (2-3.5 months)
<b>Dry Matter:</b>	21.3%
<b>Plant description:</b>	Asante is an erect tall variety (slightly below 1 meter in height) with strong stems and light green broad leaves. It flowers moderately and the flowers are pink
<b>Disease resistance/ Tolerance:</b>	Asante is moderately tolerant to Late blight but can suffer late season infections. It is also tolerant to PLRV
<b>Seed producer:</b>	Mainly produced by: ADC-Molo, Kisima Farm and KALRO Tigoni



# CAROLUS



<b>Use:</b>	Table Variety, Chips
<b>Areas to be grown:</b>	Timau, Tigoni, Molo, Narok, Bomet, Timboroa and all regions suitable for potato production.
<b>Maturity:</b>	Medium (3.5 months)
<b>Yield Potential:</b>	High (40 t/ha or 16.19 ton/acre)
<b>Tuber features:</b>	Medium size round tubers Shallow pink eyes Yellow skin Yellow flesh
<b>Tuber dormancy:</b>	long
<b>Plant description:</b>	Carolus is an early main crop with violet flower .Slow initial development and later on a medium open silhouette. Stem type plant, plant height is tall with large leaf size. The leafs are medium to dark green and the stems have a medium to strong anthocyanin coloration. It is suitable for organic growing
<b>Dry Matter:</b>	21.6 %
<b>Disease resistance/ Tolerance:</b>	The variety is susceptible to PCN- Ro 1, Ro 4- and common scab. It has medium to high tolerance to potato Leaf Roll Virus and immune to foliage and tuber late blight. It is also immune to Virus Y <sup>n</sup> and quite resistant to Virus Y <sup>ntn</sup> .
<b>Seed Producer:</b>	Agrico East Africa



<b>Use:</b>	Crisps, Chips, Dehydrate products ( Flakes and granulate) *has low sugar content and beautiful frying color
<b>Areas to be grown:</b>	Suitable for all potato-growing areas
<b>Maturity:</b>	Medium (3-4 months)
<b>Yield Potential:</b>	Low to Medium (25-35 tons/ha or 10.12-14.16 tons/acre)
<b>Tubers features:</b>	Short oval tubers Shallow eyes Yellow skin Light yellow flesh
<b>Tuber dormancy:</b>	Medium (1-2 Months)
<b>Dry matter:</b>	25.5%
<b>Plant description:</b>	Caruso is an intermediate variety type, high yielding main crop variety with low reducing sugar content.
<b>Disease resistance/ Tolerance:</b>	Caruso is resistant to PCN Ro1 and 4, PVY, Leaf Roll and highly resistant to Late blight, Tuber blight, Common scab and Internal rust spot.
<b>Seed producer:</b>	Den Hartigh

# CHALLENGER



<b>Use:</b>	Chips, Table variety
<b>Areas to be grown:</b>	Suitable for all potato-growing areas
<b>Maturity:</b>	Late (>4 months)
<b>Yield Potential:</b>	High (>40 tons/ha or >16.19 tons/acre)
<b>Tuber features:</b>	Long oval to long tubers Medium smooth bright yellow skin Shallow eye depth Light yellow flesh
<b>Tuber dormancy:</b>	Medium (1-2 Months)
<b>Dry Matter:</b>	22%
<b>Plant description:</b>	Challenger is a tall variety. It flowers profusely and the flowers are white.
<b>Disease resistance/ Tolerance:</b>	Challenger has good resistance to Common and Powdery scab, medium resistant to Late blight, quite resistant to Early blight and resistant to wart disease.
<b>Seed producer:</b>	Kisima Farm/HZPC Holland B.V



<b>Use:</b>	Table variety
<b>Areas to be grown:</b>	For all regions suitable for potato production. It also does well in warm conditions
<b>Maturity:</b>	Medium (3-4 months)
<b>Yield Potential:</b>	High (>40 tons/ha or >16.19 tons/acre)
<b>Tuber features:</b>	Oblong shaped White cream skin Shallow pinkish eyes Cream flesh
<b>Tuber dormancy:</b>	Long (2.5-3 Months)
<b>Dry Matter:</b>	24%
<b>Plant description:</b>	Chulu is a medium tall potato plant with strong semi erect stems and dark green medium size leaves with white flowers.
<b>Disease Resistance/ Tolerance:</b>	Chulu is tolerant to Late blight & Potato Virus X
<b>Seed producer:</b>	ADC-Molo



<b>Use:</b>	Table Variety, Chips A table potato with short cooking time, mealy and free of discoloration
<b>Areas to be grown:</b>	Suitable for all potato-growing areas.
<b>Maturity:</b>	Medium (3-4 months)
<b>Yield Potential:</b>	High (>40 tons/ha or >16.19 tons/acre)
<b>Tubers features:</b>	Large, round oval, tubers uniform in shape Yellow skin Yellow flesh color Very shallow eyes Good resistance to internal bruising
<b>Tuber dormancy:</b>	Long (>2 Months)
<b>Dry Matter:</b>	Information Not Available (I.N.A.)
<b>Plant description:</b>	Connect is a tall plant with rapid development and with good ground cover. It has dark green leaves and it does not flower. Connect has good tolerance to drought
<b>Disease resistance/ Tolerance:</b>	Connect is resistant to Late blight and viruses
<b>Seed producer:</b>	Den Hartigh





<b>Use:</b>	Chips, Crisps, Table variety
<b>Areas to be grown:</b>	Suitable for all potato-growing areas
<b>Maturity:</b>	Early ( $\leq 3$ Months)
<b>Yield Potential:</b>	High ( $>40$ tons/ha or $>16.19$ tons/acre) intensive management
<b>Tuber features:</b>	Large oval Yellow skin Light yellow flesh Medium eyes
<b>Tuber Dormancy:</b>	Short ( $<1$ Month)
<b>Dry Matter:</b>	21.2%
<b>Plant description:</b>	Derby is medium in height. It exhibits a leaf type foliage structure and semi-upright growth. The variety exhibits low frequency of flowers.
<b>Disease resistance/ Tolerance:</b>	Derby has good resistance to Late blight and Scab, it is resistant to PCN ( <i>Globoderarostochiensis</i> species) and Wart disease <i>Fysio 1 and 2</i>
<b>Seed Producer:</b>	Kisima Farm/ HZPC Holland B.V

# DESIREE



<b>Use:</b>	Chips, Table variety
<b>Areas to be grown:</b>	High altitude of 1800-2600 M.A.S.L. is the best. It does well in areas such as Kiambu, Nyandarua, Nyeri, Laikipia, Meru, Nakuru, Bomet, Narok, Kwale, Nandi, Kisii, Kwale, Kericho, Elgeyo Marakwet, Nandi, Uasin Gishu, Trans-Nzoia, West Pokot, Taita-Taveta and Cherangani hills.
<b>Maturity:</b>	Early to Medium (2.5 -3.5 months)
<b>Yield Potential:</b>	Medium (35-40 tons/ha or 14.16-16.19 tons / acre)
<b>Tubers Features:</b>	Long oval Smooth red skin Light yellow flesh Medium eyes
<b>Tuber dormancy:</b>	Medium (1-2 Months)
<b>Dry Matter:</b>	21%
<b>Plant Description:</b>	Desiree is an erect medium tall variety (about 0.7 meter in height) with strong stems and dark green medium sized leaves. It flowers scarcely and the flowers are light pink.
<b>Disease resistance/ Tolerance:</b>	Desiree is moderately tolerant to Potato Virus Y (PVY) and very susceptible to late blight
<b>Seed producer:</b>	Mainly produced by ADC-Molo and KALRO Tigoni

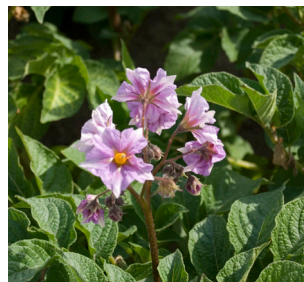


<b>Use:</b>	Crisps, Chips
<b>Areas to be grown:</b>	Suitable for all potato-growing areas
<b>Maturity:</b>	Early (3months)
<b>Yield Potential:</b>	Medium (30 - 40 tons/ha or 12.14-16.19 tons/acre)
<b>Tuber features:</b>	High numbers of round tubers Yellow skin Yellow flesh Shallow red eyes
<b>Tuber dormancy:</b>	Medium (1-2 Months)
<b>Dry matter:</b>	24%
<b>Plant description:</b>	Destiny has good initial development; it has dark green leaves and light to dark purple flowers. Destiny also has some heat tolerance and can be grown in lower altitude areas too.
<b>Disease resistance/ Tolerance:</b>	Destiny has good resistance to Potato VirusY, Potato Virus X, PCN, Early blight and <i>Erwinia</i> sp.
<b>Seed producer:</b>	Agrico East Africa

# DUTCH ROBIJN



<b>Use:</b>	Crisps
<b>Area to be grown:</b>	High altitude of 1800-2600 M.A.S.L. is the best. It does well in areas such as Kiambu, Nyandarua, Nyeri, Meru, Nakuru, Bomet, Uasin Gishu, Trans-Nzoia, West Pokot, Taita-Taveta and Cherangani hills. Best areas are Bomet County.
<b>Maturity:</b>	Medium (3-4 months)
<b>Yield Potential:</b>	Low ( $\leq 30$ tons/ha or $\leq 12.14$ tons/acre)
<b>Tubers features:</b>	Round shaped Rough red skin Pale yellow flesh Medium deep eyes
<b>Tuber dormancy:</b>	Long (3.5-4.5 months)
<b>Dry Matter:</b>	21.6%
<b>Plant Description:</b>	Dutch robijn is an erect medium tall variety (about 0.7 meter in height) with strong stems and dark green medium sized leaves. It flowers scarcely and the flowers are white with a light pink hue.
<b>Disease resistance/ Tolerance:</b>	Dutch Robijn is highly susceptible to Late blight.
<b>Seed producer:</b>	Mainly produced by ADC-Molo, GTIL (apical cuttings and Minitubers only) KALRO-Tigoni and Kisima Farm



<b>Use:</b>	Table variety
<b>Areas to be grown:</b>	Suitable for all potato-growing areas.
<b>Maturity:</b>	Late (>4 months)
<b>Yield Potential:</b>	High (>40 tons/ha or >16.19 tons/acre) under intense management.
<b>Tubers features:</b>	Long oval uniform medium in size tubers Yellow skin Light yellow flesh Shallow eyes
<b>Tuber dormancy:</b>	Long (>2 Months)
<b>Dry matter:</b>	18%
<b>Plant description:</b>	El-mundo grows well and develops strong foliage and therefore it should not be over fertilized. The use of organic manure is not recommended with this variety. It is tolerant to drought.
<b>Disease resistanc/ Tolerance:</b>	El- Mundo has good resistance to Late blight and is resistant to PVY.
<b>Seed producer:</b>	Stet Holland B.V



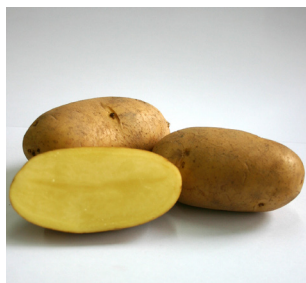


<b>Use:</b>	Table variety
<b>Areas to be grown:</b>	Suitable for all potato-growing areas Maturity: Medium (3-4 months)
<b>Yield Potential:</b>	High (>40 tons/ha or >16.19 tons/acre)
<b>Tuber features:</b>	Large oval tubers Bright, smooth light yellow skin Medium eyes
<b>Tuber dormancy:</b>	Long (>2 Months)
<b>Dry Matter:</b>	I.N.A.
<b>Plant description:</b>	Evora has high foliage development with high number of red violet flowers.
<b>Disease resistance/Tolerance:</b>	Evora has medium resistance to Common and Powdery scab, Early blight and Late blight.
<b>Seed Producer:</b>	Kisima Farm/ HZPC Holland B.V

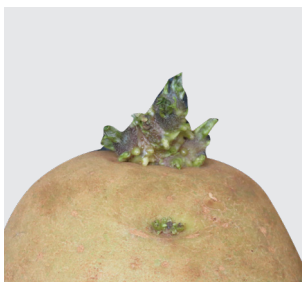
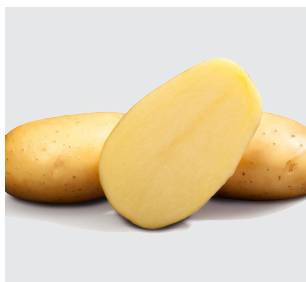
# FALUKA



<b>Use:</b>	Table variety
<b>Areas to be grown:</b>	Suitable for all potato-growing areas.
<b>Maturity:</b>	Early (3months)
<b>Yield Potential:</b>	High (>40 tons/ha or >16.19 tons/acre)
<b>Tubers features:</b>	Large, long oval tubers, uniform in shape Yellow skin Cream flesh color Shallow eyes Good resistance to internal bruising
<b>Tuber dormancy:</b>	Long (>2 Months)
<b>Dry matter:</b>	18.1%
<b>Plant description:</b>	Faluka is a tall variety with semi-erect stems. It has medium to large green leaves. It flowers profusely and the flowers are white. It has good heat tolerance.
<b>Disease resistance/ Tolerance:</b>	Faluka is susceptible to Leaf blight and Tuber blight; it has good resistance to Virus X and Virus Y <sup>n</sup> and is moderately resistant to Common scab.
<b>Seed producer:</b>	Agrico East Africa

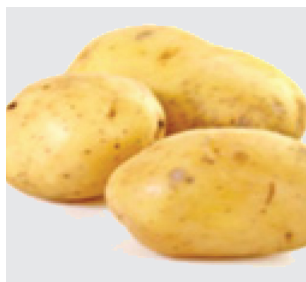


<b>Use:</b>	Table Variety
<b>Areas to be grown:</b>	For all regions suitable for potato production
<b>Maturity:</b>	Medium (3-4) months
<b>Yield Potential:</b>	High (55 ton/ha or 22.27 tons per acre)
<b>Tuber features:</b>	Long oval, big tubers Bright and smooth skin Yellow flesh
<b>Tuber dormancy:</b>	Medium (2-2 Months)
<b>Dry matter:</b>	I.N.A.
<b>Plant description:</b>	High, semi-upright plant with medium to large leaves, medium green. It flowers profusely and the flowers are purple.
<b>Disease resistance:</b>	Good resistance to <i>Alternaria</i> , Common scab and Powdery scab
<b>Seed Producer:</b>	Kisima Farm/HZPC Holland B.V



<b>Use:</b>	Chips, Table variety Very good table quality and excellent frying quality
<b>Areas to be grown:</b>	Suitable for all potato-growing areas
<b>Maturity:</b>	Late (>4 months)
<b>Yield Potential:</b>	High (>40 tons/ha or >16.19 tons/acre)
<b>Tubers features:</b>	Oval medium to big sized tubers Yellow, smooth to slightly netted skin Very shallow eye depth Pure yellow colored flesh; has low raw discoloration
<b>Tuber dormancy:</b>	Medium (1-2 Months)
<b>Dry Matter:</b>	21%
<b>Plant description:</b>	Jelly is a tall variety with erect stems. Leaves are large and green in colour. It flowers scarcely and the flowers are white. It has high tolerance drought and heat.
<b>Disease resistance/ Tolerance:</b>	Tolerant to Late blight, Black leg, <i>Rhizoctonia</i> sp, Common scab, Bacterial wilt, Potato Virus Y (PVY), Cyst Nematodes and potato wart disease.
<b>Seed producer:</b>	Charvi Investment/ EuroPlant Aardappel B.V

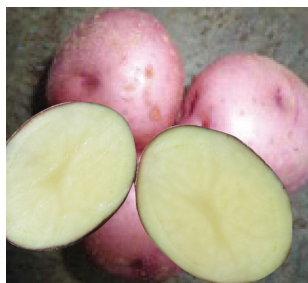
# KENYA BARAKA



<b>Use:</b>	Table variety, Chips
<b>Areas to be grown:</b>	High altitude of 1600-2700 M.A.S.L. is the best. It does well in areas such as Nyandarua, Kiambu, Nyeri, Laikipia, Meru, Nakuru, Bomet, Narok, Kwale, Nandi, Kisii, Kericho, Elgeyo Marakwet, Uasin Gishu, Trans-Nzoia, West Pokot, Taita-Taveta and Cherangani hills
<b>Maturity:</b>	Medium (3 months)
<b>Yield Potential:</b>	Medium (30-40 tons/ha or 12.14-16.19 tons/acre)
<b>Features:</b>	Tubers Oval shaped Rough white skin Shallow eyes White flesh
<b>Tuber dormancy:</b>	Long (3.5-4.5 months)
<b>Dry Matter:</b>	21.5 %
<b>Plant description:</b>	Kenya Baraka is an erect tall variety (about 1 meter in height) with strong stems and green broad leaves. It flowers moderately and the flowers are white.
<b>Disease resistance / Tolerance:</b>	Kenya Baraka is tolerant to Late blight
<b>Seed producer:</b>	Mainly produced by ADC-Molo and KALRO-Tigoni



# KENYA KARIBU



<b>Use:</b>	Table variety, Crisps
<b>Areas to be grown:</b>	Altitude of 1800-2600 M.A.S.L. is the best. It does well in areas such as Nyandarua, Kiambu, Nyeri, Laikipia, Meru, Nakuru, Bomet, Narok, Kwale, Nandi, Kisii, Kericho and Cherangani hills.
<b>Maturity:</b>	Medium (3-4 months)
<b>Yield Potential:</b>	Medium to High (35-45 tons/ha or 14.16-18.21 tons/acre)
<b>Tubers features:</b>	Round in shape Smooth red skin Deep eyes Yellow flesh
<b>Tuber dormancy:</b>	Long (3.5 months)
<b>Dry Matter:</b>	21.4%
<b>Plant description:</b>	Kenya Karibu is an erect tall variety (slightly above 1 metre in height) with strong stems and dark green narrow pointed leaves. It flowers profusely and the flowers are pink.
<b>Disease resistance/ Tolerance:</b>	Kenya Karibu is tolerant to Late blight and most of the potato viruses.
<b>Seed producer:</b>	Mainly produced by ADC-Molo and KALRO-Tigoni



<b>Use:</b>	Chips, Crisps, Table variety
<b>Areas to be grown:</b>	High altitude of 1800-2800 M.A.S.L. is the best. It does well in areas such as Nyandarua, Kiambu, Nyeri, Laikipia, Meru, Nakuru, Bomet, Narok, Kwale, Nandi, Kisii, Kericho, Elgeyo Marakwet, Uasin Gishu, Trans-Nzoia, West Pokot, Taita-Taveta and Cherangani hills.
<b>Maturity:</b>	Late (>4 months)
<b>Yield Potential:</b>	Medium (30-40 tons/ha or 12.14-16.19 tons/acre)
<b>Tuber features:</b>	Oval shaped Smooth cream skin Shallow eyes Cream flesh
<b>Tuber dormancy:</b>	Long (2.5-3 months)
<b>Dry Matter:</b>	21.2%
<b>Plant description:</b>	Kenya Mavuno is a semi erect tall variety (about 1 meter in height) with strong stems and green medium sized leaves. It flowers profusely and the flowers are white.
<b>Disease resistance/ Tolerance:</b>	Kenya Mavuno is tolerant to Late blight and most potato virus
<b>Seed producer:</b>	Mainly produced by ADC-Molo and KALRO-Tigoni



<b>Use:</b>	Table variety, Crisps
<b>Areas to be grown:</b>	For all regions suitable for potato production.
<b>Maturity:</b>	Medium (3-4 Months)
<b>Yield Potential:</b>	Medium (>40 tons/ha or 14.16-18.21 tons/acre)
<b>Tuber features:</b>	Oval shaped tubers Smooth cream Skin Shallow pink eyes Cream flesh
<b>Tuber dormancy:</b>	Long (2.5-3 months)
<b>Dry Matter:</b>	23%
<b>Plant Description:</b>	Kenya Mpya is a semi- erect tall variety (about 1 meter in height) with strong stems and light green medium-sized leaves. It flowers scarcely and the flowers are white.
<b>Disease resistance/Tolerance:</b>	Kenya Mpya is resistant to Late blight and PLRV
<b>Seed producer:</b>	Mainly produced by ADC-Molo and KALRO-Tigoni

# KENYA SIFA



<b>Use:</b>	Table variety, Chips
<b>Areas to be grown:</b>	High altitude of 1800-2800 M.A.S.L. is the best. It does well in areas such as Nyandarua, Kiambu, Nyeri, Meru, Nakuru, Bomet, Uasin Gishu, Trans-Nzoia, West Pokot, Taita-Taveta and Cherangani hills
<b>Maturity:</b>	Medium (3-4 Months)
<b>Yield Potential:</b>	Low (<30 tons/ha or <12.14 tons /acre)
<b>Tuber features:</b>	Flat round in shape Smooth pink skin Medium deep eyes Cream flesh
<b>Tuber dormancy:</b>	Long dormancy (4-4.5 months)
<b>Dry Matter:</b>	21.3%
<b>Plant description:</b>	Kenya Sifa is an erect tall variety (slightly above 1 meter in height) with strong stems and dark green broad leaves. It flowers moderately and the flowers are light purple.
<b>Disease resistance/ Tolerance:</b>	Kenya Sifa is tolerant to Late blight and most potato viruses.
<b>Seed producer:</b>	Mainly produced by ADC-Molo

# KERR'S PINK



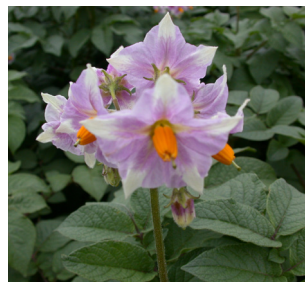
<b>Use:</b>	Chips, Crisps, Table variety
<b>Areas to be grown:</b>	Medium to high altitude of 1400-2700 M.A.S.L. It does well in areas such as Nyandarua, Kiambu, Nyeri, Meru, Nakuru, Bomet, Uasin Gishu , Trans-Nzoia, West Pokot, Taita-Taveta and Cherangani hills.
<b>Maturity:</b>	Early ( $\leq 3$ Months)
<b>Yield Potential:</b>	Low ( $< 30$ tons/ha or $< 12.14$ tons /acre)
<b>Tuber features:</b>	Round shaped tubers Smooth pink skin Deep eyes Cream flesh
<b>Tuber dormancy:</b>	Long (2-3 Months)
<b>Dry Matter:</b>	20 %
<b>Plant description:</b>	Kerr's Pink is a semi erect short variety (about 0.5 meter in height) with strong stems and dark green medium sized leaves. It flowers profusely and the flowers are white.
<b>Disease resistance/ Tolerance:</b>	Kerr's Pink is susceptible to Late blight.
<b>Seed Producer</b>	Mainly produced by KALRO - Tigoni





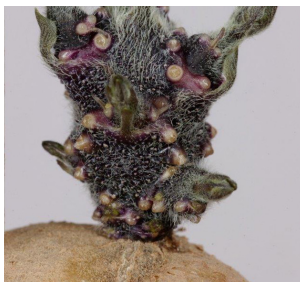
<b>Use:</b>	Table variety, Chips
<b>Areas to be grown:</b>	For all regions suitable for potato production
<b>Maturity:</b>	Medium (3-4 months)
<b>Yield Potential:</b>	Medium (>40 tons/ha or >16.19 tons/acre)
<b>Tuber features:</b>	Oblong shaped White predominant and pink secondary skin color Deep eyes Cream Flesh
<b>Tuber dormancy:</b>	Long (2.5-3 Months)
<b>Dry Matter:</b>	19%
<b>Plant description:</b>	Konjo is a medium tall potato plant with strong semi erect stems and dark green medium size leaves. It has pink flowers.
<b>Disease resistance/ Tolerance:</b>	Konjo is resistant to Late blight and Potato Virus X (PVX), It is highly resistant to Potato Leaf Roll Virus (PLRV)
<b>Seed producer:</b>	Mainly produced by ADC-Molo, Gtil (apical cuttings and Minitubers only), and Kisima Farm

# KURODA



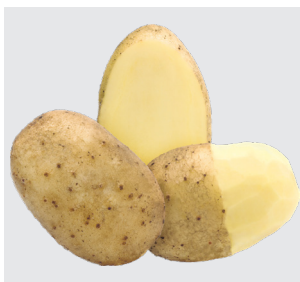
<b>Use:</b>	Chips, Table variety
<b>Areas to be grown:</b>	Suitable for all potato-growing areas
<b>Maturity:</b>	Medium (3-4 Months)
<b>Yield Potential:</b>	High (>40 tons/ha or >16.19 tons/acre)
<b>Tuber features:</b>	Large oval tubers Red skin Shallow eyes Light yellow flesh
<b>Tuber dormancy:</b>	Long (>2 Months)
<b>Dry matter:</b>	23%
<b>Plant description:</b>	Kuroda has normal initial plant development with good ground coverage. It is a semi erect high plant with large leaf size and purple flowers. The leaves are dark green. It has some heat tolerance
<b>Disease resistance/ Tolerance:</b>	Kuroda is resistant to PCN Ro 1 and 4, quite susceptible to Late blight (foliage and tuber) and quite resistant to Virus Y <sup>n</sup> and Virus Y <sup>ntn</sup> .
<b>Seed producer:</b>	Agrico East Africa

# LADY AMARILLA



<b>Use:</b>	Chips, Crisps, Table
<b>Areas to be grown:</b>	Suitable for all potato-growing areas.
<b>Maturity:</b>	Medium (3-4 months)
<b>Yield Potential:</b>	High (>40 tons/ha or >16.19 tons/acre)
<b>Tuber features:</b>	Long-to-long oval Yellow skin Shallow eyes Deep yellow flesh
<b>Tuber dormancy:</b>	Long (>2 Months)
<b>Dry Matter:</b>	I.N.A.
<b>Plant description:</b>	Lady Amarilla is a medium tall variety with semi-erect stems. Leaves are large and light green to green in colour. It flowers scarcely and the flowers are white.
<b>Disease resistance/ Tolerance:</b>	Lady Amarilla has good resistance, PVY <sup>ntn</sup> and PVY <sub>A and X'</sub> . It has moderate resistance to Common scab and susceptible to Foliage blight
<b>Seed producer:</b>	Suera Farm/C. Meijer B.V

# LADY TERRA



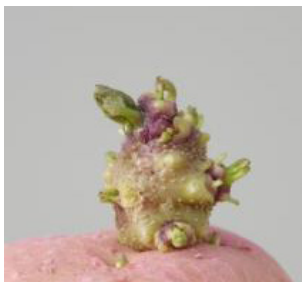
<b>Use:</b>	Chips, Table
<b>Areas to be grown:</b>	Medium to high altitude of 1400-3000 M.A.S.L. It does well in areas such as Nyandarua, Kiambu, Nyeri, Laikipia, Meru, Nakuru, Bomet, Narok, Kwale, Nandi, Kisii, Kericho, Elgeyo Marakwet, Uasin Gishu, Trans-Nzoia, West Pokot, Taita-Taveta and Cherangani hills.
<b>Maturity:</b>	Medium (3-4 Months)
<b>Yield Potential:</b>	High (> 40 tons/ha or 16.19 ton/acre)
<b>Tuber features:</b>	Long/Oval Yellow skin Shallow eye depth Light yellow to white flesh color
<b>Tuber dormancy:</b>	Long (>2months)
<b>Dry Matter:</b>	I.N.A.
<b>Plant description:</b>	Lady Terra has a very strong plant development. It gives an average number of tubers per plant and brings high yields. Lady Terra has average amount of white flowers.
<b>Disease resistance/ Tolerance:</b>	Medium resistance to Common scab and Leaf Roll Virus. Resistant to PCN Ro 1
<b>Seed Producer:</b>	Mainly produced by Suera Farm/C. Meijer B.V



<b>Use:</b>	Chips
<b>Areas to be grown:</b>	Suitable for all potato-growing areas
<b>Maturity:</b>	Medium (3-4 months)
<b>Yield Potential:</b>	High (>40 tons/ha or >16.19 tons/acre) under intensive management
<b>Tuber features:</b>	Oval-long tubers Red smooth skin Shallow eyes Deep yellow flesh
<b>Tuber dormancy:</b>	Long (>2 Months)
<b>Dry Matter:</b>	I.N.A.
<b>Plant description:</b>	Laura is a medium to high plant. Its flowers are white with moderate flowering frequency. The variety has good resistance to heat and drought.
<b>Disease resistance/ Tolerance:</b>	Laura is resistant to PCN- Ro 1-5, has high resistance to Potato Leaf Roll Virus, Very high resistance to Potato Virus Y (PVY), medium to high resistance to Tuber blight and Common scab and medium resistance to Foliage blight.
<b>Seed producer:</b>	Charvi Investment/ EuroPlan Aardappel B.V



# LENANA

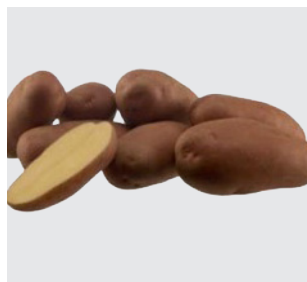


<b>Use:</b>	Table variety, Chips, Crisps
<b>Areas to be grown:</b>	For all regions suitable for potato production
<b>Maturity:</b>	Medium (3-4 months)
<b>Yield Potential:</b>	High (>40 tons/ha or >16.19 tons/acre)
<b>Tuber features:</b>	Oblong shaped, Cream white skin Shallow eyes Cream flesh
<b>Tuber dormancy:</b>	Long (2-3 Months)
<b>Dry Matter:</b>	22%
<b>Plant description:</b>	Lenana is a medium tall potato plant with strong semi erect stems and dark green medium size with white flowers.
<b>Disease Resistance/ Tolerance:</b>	Lenana is resistant to Late blight, Potato Virus X & Potato Leaf Roll Virus
<b>Seed producer:</b>	Mainly produced by ADC-Molo

# MARKIES

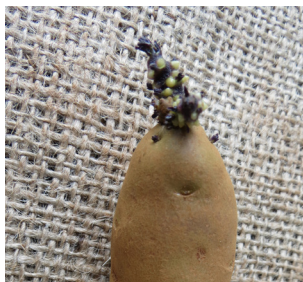
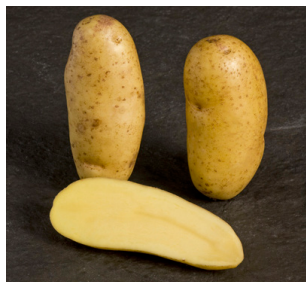


<b>Use:</b>	Chips, Table, Crisps
<b>Areas to be grown:</b>	Suitable for all potato-growing regions
<b>Maturity:</b>	Late (>4 months)
<b>Yield Potential:</b>	High (>40 tons/ha or >16.19 tons/acre)
<b>Tubers features:</b>	Large, oval to long oval tubers, uniform in shape Yellow skin Shallow eyes Yellow flesh Good resistance to internal bruising
<b>Tuber dormancy:</b>	Long (>2 Months)
<b>Dry Matter:</b>	23%
<b>Plant description:</b>	Markies is an erect tall variety with white flowers. The variety has good heat tolerance
<b>Disease resistance/ Tolerance:</b>	Markies has fairly good resistance to early blight, and Virus Y, moderate resistance to Leaf Roll, good resistance to Virus A and Virus X, high tolerance to late blight resistant to Ro1 of the Potato Cyst Nematode, Fairly susceptible to Common scab.
<b>Seed producer:</b>	Agrico East Africa

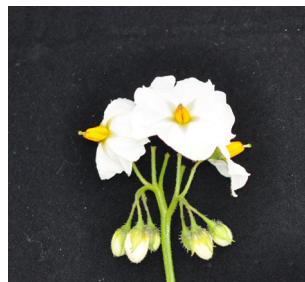


<b>Use:</b>	Chips, Table, crisps
<b>Areas to be grown:</b>	Suitable for all potato-growing regions
<b>Maturity:</b>	Late (>4 months)
<b>Yield Potential:</b>	High (>40 tons/ha or >16.19 tons/acre)
<b>Tuber features:</b>	Oval to long oval tuber (uniform in grading) Red smooth skin Shallow eyes Cream flesh Good resistance to internal bruising
<b>Tuber dormancy:</b>	Medium (1-2 Months)
<b>Dry matter:</b>	19.3%
<b>Plant description:</b>	Manitou is a tall variety with erect to semi-erect stems. Leaves are large and light to green in colour. It flowers profusely and the flowers are violet. Manitou is rather sensitive to harvest damage, needs to be hardened off for 3 weeks
<b>Disease resistance/ Tolerance:</b>	Manitou is susceptible to Leaf blight, has good resistance to Tuber blight and Virus Yn, moderate resistance to Virus X and Common scab, resistant to Ro1 of the Potato Cyst Nematode and immune to wart disease.
<b>Seed producer:</b>	Agrico East Africa

# MAYAN GOLD



<b>Use:</b>	Chips, Table
<b>Areas to be grown:</b>	Medium and high altitude of 1500≥ M.A.S.L. It does well in areas such as Nyandarua, Kiambu, Nyeri, Laikipia, Meru, Nakuru, Bomet, Narok, Kwale, Nandi, Kisii, Kericho, Elgeyo Marakwet, Uasin Gishu, Trans-Nzoia, West Pokot, Taita-Taveta and Cherangani hills.
<b>Maturity:</b>	Medium (3-4 Months)
<b>Yield Potential:</b>	Low (<30 tons/ha or <12.14 tons /acre)
<b>Tubers features:</b>	Long oval tubers Rough yellow skin Medium eyes Yellow flesh
<b>Tuber dormancy:</b>	Long (2 months)
<b>Dry Matter:</b>	I.N.A.
<b>Plant description:</b>	Mayan Gold is a semi erect medium variety (about 0.6 meter in height) with strong stems and light green narrow leaves. It flowers moderately and the flowers are purple.
<b>Disease resistance/ Tolerance:</b>	Mayan Gold is moderately resistant to Late blight, Potato Virus Y (PVY) and Potato Leaf Roll Virus (PLRV)
<b>Seed Producer:</b>	KALRO- Tigoni



<b>Use:</b>	Table Variety
<b>Areas to be grown:</b>	Suitable for all potato-growing areas
<b>Maturity:</b>	Medium (3-4 months)
<b>Yield Potential:</b>	High (>40 tons/ha or >16.19 tons/acre) under intensive management
<b>Tuber features:</b>	Oval tubers Yellow smooth skin, Seldom slightly netted Shallow eyes Pure yellow flesh
<b>Tuber dormancy:</b>	(>2 Months)
<b>Dry Matter:</b>	I.N.A.
<b>Plant description:</b>	Milva has a medium plant height. It flowers moderately and the flowers are white. The variety has good tolerance to heat and drought
<b>Disease resistance/ Tolerance:</b>	Milva has high resistance to PCN- Ro 1 and 4, medium to high resistance to Potato Leaf Roll Virus and high resistance to Late blight, Black leg and Common scab.
<b>Seed producer:</b>	Charvi Investment/EuroPlant Aardappel B.V



<b>Use:</b>	Chips, Table Has an excellent taste
<b>Areas to be grown:</b>	Suitable for all growing regions
<b>Maturity:</b>	Late (>4 months)
<b>Yield Potential:</b>	High (>40 tons/ha or >16.19 tons/acre) under intensive management
<b>Tubers features:</b>	Large long oval tubers, Uniform in grading Yellow, smooth to medium smooth skin Shallow eyes Deep yellow flesh Good resistance to internal bruising
<b>Tuber dormancy:</b>	Short (<1 Month)
<b>Dry matter:</b>	19%
<b>Plant description:</b>	Musica is a medium to tall variety with semi-erect spreading stems. Leaves are light green in colour. It exhibits absence or very low flowering frequency. The flowers are white.
<b>Disease resistance/ Tolerance:</b>	Musica is susceptible to Leaf blight, good resistance to Potato Virus X, Virus Y <sup>n</sup> and Common scab, immune to wart disease, resistant to Ro1 and Ro2 and 3 of the Potato Cyst Nematode.
<b>Seed producer:</b>	Suera Farm/C. Meijer B.V





<b>Use:</b>	Table variety
<b>Areas to be grown:</b>	For all regions suitable for potato production. It also does well in warm Conditions
<b>Maturity:</b>	Medium (3-4 months)
<b>Yield Potential:</b>	High (>40 tons/ha or >16.19 tons/acre)
<b>Tuber features:</b>	Oblong shaped White cream skin Shallow pinkish eyes Cream flesh
<b>Tuber dormancy:</b>	Long (2.5-3 Months)
<b>Dry Matter:</b>	20%
<b>Plant description:</b>	Nyota is a medium tall potato plant with strong semi erect stems and dark green medium size leaves with pink flowers. It is tolerant to heat
<b>Disease Resistance/ Tolerance:</b>	Nyota is tolerant to Late blight
<b>Seed producer:</b>	Mainly produced by ADC-Molo, KALRO-Tigoni

# PANAMERA



<b>Use:</b>	Table variety
<b>Areas to be grown:</b>	Suitable for all potato-growing areas
<b>Maturity:</b>	Late (>4 month)
<b>Yield Potential:</b>	High (>40 tons/ha or >16.19 tons/acre)
<b>Tuber features:</b>	Large oval tubers Very bright and smooth yellow skin Shallow eyes
<b>Tuber dormancy:</b>	Medium (1-2 Months)
<b>Dry Matter:</b>	20.8%
<b>Plant description:</b>	Panamera has very high and dense foliage with high number of white flowers
<b>Disease resistance /Tolerance:</b>	Panamera has good resistance to Late blight, Common and Powdery scab, wart disease and Early blight.
<b>Seed producer:</b>	Kisima Farm/HZPC Holland B.V

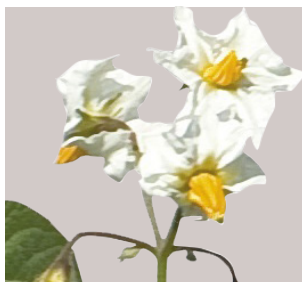
# PURPLE GOLD



<b>Use:</b>	Crisps
<b>Areas to be grown:</b>	High altitude of 1800-3000 M.A.S.L. is the best. It does well in areas such as Nyandarua, Kiambu, Nyeri, Meru, Nakuru, Bomet, Uasin Gishu, Trans-Nzoia, West Pokot, Taita-Taveta and Cherangani hills.
<b>Maturity:</b>	Medium (3-4 Months)
<b>Yield Potential:</b>	Low (<30 tons/ha or <12.14 tons /acre)
<b>Tuber features:</b>	Round tubers, Smooth dark purple skin Medium eye depth White flesh
<b>Tuber dormancy:</b>	Long (4-4.5 Months)
<b>Dry Matter:</b>	I.N.A.
<b>Plant description:</b>	Purple Gold is a semi- erect tall variety (slightly below 1 metre in height) with moderately strong stems and dark green medium-sized leaves. It flowers moderately and the flowers are purple.
<b>Disease resistance / Tolerance:</b>	Purple gold is moderately resistant to Late blight, PLRV and resistant to Potato Virus X (PVX).
<b>Seed producer:</b>	KALRO-Tigoni



<b>Use:</b>	Table variety
<b>Areas to be grown:</b>	Suitable for all potato-growing areas
<b>Maturity:</b>	Late (>4 months)
<b>Yield Potential:</b>	High (>40 tons/ha or >16.19 tons/acre)
<b>Tuber features:</b>	Medium to big size Red skin Shallow eyes Yellow Flesh
<b>Tuber dormancy:</b>	Medium (1-2 Months)
<b>Dry Matter:</b>	22%
<b>Plant description:</b>	Rodeo has high foliage development. It Flowers profusely and the flowers are violet
<b>Disease resistance/Tolerance:</b>	Rodeo has good resistance to scab, It is resistant to Wart disease, has medium resistance to Late blight and high resistance to Early blight
<b>Seed producer:</b>	Kisima Farm/ HZPC Holland B.V



<b>Use:</b>	Chips, Table
<b>Areas to be grown:</b>	Medium to high altitude of 1400-3000 M.A.S.L. It does well in areas such as Nyandarua, Kiambu, Nyeri, Laikipia, Meru, Nakuru, Bomet, Narok, Kwale, Nandi, Kisii, Kericho, Elgeyo Marakwet, Uasin Gishu, Trans-Nzoia, West Pokot, Taita-Taveta and Cherangani hills.
<b>Maturity:</b>	Medium (3-4 Months)
<b>Yield Potential:</b>	High (> 40 tons/ha or >16.19 tons/acre)
<b>Tuber features:</b>	Round/Oval Yellow skin Shallow eye depth Light yellow flesh
<b>Tuber dormancy:</b>	Long (> 2 months)
<b>Dry Matter:</b>	20%
<b>Plant description:</b>	Rock has a very nice and equal development of the crop during the growing season. It gives a high number of tubers per plant and brings high yields. Rock has average amount of white flowers.
<b>Disease resistance/ Tolerance:</b>	Resistant to PCN Ro 1 – 3 and Pa 2. Medium resistance to Common scab and Leaf Roll Virus.
<b>Seed producer:</b>	Suera Farm/ C. Meijer B.V



<b>Use:</b>	Chips, Table variety, crisp, flakes and granulate
<b>Areas to be grown:</b>	Suitable for all potato-growing areas
<b>Maturity:</b>	Medium (3-4 months)
<b>Yield Potential:</b>	High (>40 tons/ha or >16.19 tons/acre) under intense management)
<b>Tubers features:</b>	Large, round-oval tubers Yellow skin Shallow eyes Pale yellow-to-yellow flesh Good resistance to internal bruising
<b>Tuber dormancy:</b>	Medium (1-2 Months)
<b>Dry Matter:</b>	I.N.A.
<b>Plant description:</b>	Royal has dark green leaves and in most cases no flowering occurs, flowers are white with yellow tips.
<b>Disease resistance/Tolerance:</b>	Royal is resistant to nematodes and wart diseases and has medium resistance to Late blight and scab.
<b>Seed producer:</b>	Danespo

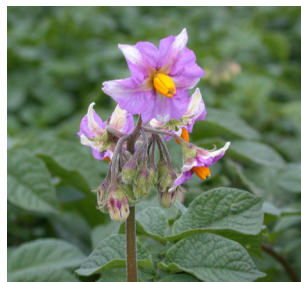


# RUMBA



<b>Use:</b>	Crisps Excellent frying color and taste with low sugar content
<b>Areas to be grown:</b>	Suitable for all potato-growing areas
<b>Maturity:</b>	Medium (3-4 Months)
<b>Yield Potential:</b>	High (>40 tons/ha or >16.19 tons/acre)
<b>Tubers feature:</b>	Short-oval in shape tubers, (uniform grading) Yellow slightly netted skin Medium shallow eye Light yellow flesh
<b>Tuber dormancy:</b>	Long (>2 Months)
<b>Dry Matter:</b>	20.9%
<b>Plant description:</b>	Rumba has white flowers with yellow tip. It has good tolerance to drought
<b>Disease resistance/ Tolerance:</b>	Rumba has high resistance to Late blight, Potato Virus Y, and Potato Leaf Roll Virus.
<b>Seed producer:</b>	Charvi Investment /EuroPlant Aardappel B.V

# RUDOLPH



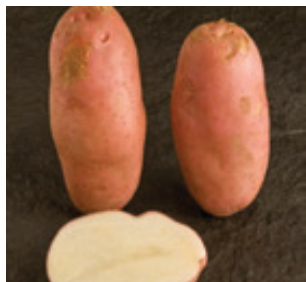
<b>Uses:</b>	Table variety, Chips
<b>Areas grow:</b>	Suitable for all potato-growing areas.
<b>Maturity:</b>	Medium (3-4 months)
<b>Yield Potential:</b>	High (>40 tons/ha or >16.19 tons/acre)
<b>Tubers features:</b>	<p>Large oval to round oval tubers, uniform in shape</p> <p>Red smooth to medium smooth skin</p> <p>Rather shallow eyes</p> <p>White flesh</p> <p>Moderately resistant to internal bruising</p>
<b>Tuber dormancy:</b>	Long (>2 Months)
<b>Dry Matter:</b>	20.5%
<b>Plant description:</b>	<p>Rudolph is an erect tall variety with medium to large dark green leaves. It flowers profusely and the flowers are pink. It is recommended to apply a short heat shock before planting. Desprouting once is optional. The best method to have a good tubers set is proper pre-sprouting after taking off the top sprout before planting.</p>
<b>Disease resistance/ Tolerance:</b>	<p>Rudolph is susceptible to Leaf blight, Common scab and PVY, has good resistance to Tuber blight, moderate resistance to Potato Virus X and immune to wart disease.</p>
<b>Seed producer:</b>	Agrico East Africa

# SAGITTA



<b>Use:</b>	Table, Chips, Crisps
<b>Areas to be grown:</b>	All regions suitable for potato production
<b>Maturity:</b>	Medium (3-4 Months)
<b>Yield Potential:</b>	High (>40 tons/ha or >16.19 tons/acre) under intensive production
<b>Tubers features:</b>	Oval tubers Yellow skin Shallow eyes Light yellow flesh
<b>Tuber dormancy:</b>	Medium (1-2 Months)
<b>Dry Matter:</b>	21.7%
<b>Plant description:</b>	Sagitta is a medium to tall plant with intermediate type foliage structure and high frequency of pink flowers. It has semi upright growth habit and medium thick stems.
<b>Disease resistance / Tolerance:</b>	Sagitta is resistant to PCN types <i>Globodera rostochiensis</i> and Wart disease <i>fysio 1</i> . It is highly resistant to Spraing, Tuber blight, and PVY <sup>tn</sup> . It is tolerant to PVY <sup>tn</sup> in tuber, moderate resistant to Foliage blight and Common scab and good resistance to Powdery scab.
<b>Seed producer:</b>	Kisima Farm/HZPC Holland B.V

# SARPO MIRA



<b>Use:</b>	Chips, Table variety (tasty and floury tubers), Flakes
<b>Areas to be grown:</b>	Suitable for all potato-growing areas
<b>Maturity:</b>	Medium (3 to 4 months)
<b>Yield Potential:</b>	High (>40 tons/ha or >16.19 tons/acre)
<b>Tubers features:</b>	Large, long-oval tubers uniform in shape Red skin Shallow eyes Pale yellow flesh
<b>Tuber dormancy:</b>	Medium (1-2 Months)
<b>Dry Matter:</b>	22.5%
<b>Plant description:</b>	Sarpo Mira grows very tall with vigorous weed suppressing foliage. It has pink flowers. The variety is high yielding and has good tolerance to drought
<b>Disease resistance/ Tolerance:</b>	Sarpo mira has extremely good resistance to Late blight (no spraying against blight needed) and Virus.
<b>Seed producer:</b>	Danespo

# SHANGI



<b>Use:</b>	Chips, Table variety
<b>Areas to be grown:</b>	≥1500 M.A.S.L. is the best. It does well in areas such as Nyandarua, Kiambu, Nyeri, Laikipia, Meru, Nakuru, Bomet, Narok, Kwale, Nandi, Kisii, Kericho, Elgeyo Marakwet, Uasin Gishu, Trans-Nzoia, West Pokot, Taita-Taveta, and Cherangani hills.
<b>Maturity:</b>	Early (≤3 Months)
<b>Yield Potential:</b>	Medium (30-40 tons/ha or 12.14-16.19 tons/acre)
<b>Tubers features:</b>	Oval shaped tubers Smooth cream skin Medium to deep eyes White flesh
<b>Tuber dormancy:</b>	Short (<1 Month)
<b>Dry Matter:</b>	21.4%
<b>Plant description:</b>	Shangi is a semi- erect medium tall variety (slightly below 1 metre in height) with moderately strong stems and light green broad leaves. It flowers profusely and the flowers are pink.
<b>Disease resistance/ Tolerance:</b>	Shangi is moderately susceptible to Late blight
<b>Seed producer:</b>	Mainly produced by ADC-Molo and KALRO-Tigoni

# SHEREKEA



<b>Use:</b>	Table variety, Chips and Crisps Explore its excellent fry qualities and taste
<b>Areas to be grown:</b>	For all regions suitable for potato production
<b>Maturity:</b>	Medium (3-4 Months)
<b>Yield Potential:</b>	High (>40 tons/ha or >16.19 tons/acre)
<b>Tubers features:</b>	Round tubers Smooth red skin Deep eyes Cream flesh
<b>Tuber dormancy:</b>	Long (4-4.5 Months)
<b>Dry Matter:</b>	21.3%
<b>Plant description:</b>	Sherekea is a semi-erect tall variety (slightly below 1 meter in height) with strong stems and light green, small to medium sized leaves. It flowers profusely and the flowers are light purple.
<b>Disease resistance/ Tolerance:</b>	Sherekea is resistant to Late blight and Potato Virus X
<b>Seed producer:</b>	Mainly produced by ADC-Molo, KALRO-Tigoni and Kisima Farm





<b>Use:</b>	Table variety (firm after cooking)
<b>Areas to be grown:</b>	Suitable for all potato-growing areas
<b>Maturity:</b>	Late (>4 month)
<b>Yield Potential:</b>	High (>40 tons/ha or >16.19 tons/acre)
<b>Tuber features:</b>	Large, round to round oval tubers Bright smooth light yellow skin Shallow eyes Cream flesh
<b>Tuber dormancy:</b>	Medium (1-2 Months)
<b>Dry Matter:</b>	19.1%
<b>Plant description:</b>	Sifra is a medium to tall variety with dense foliage. It flowers profusely and the flowers are white.
<b>Disease resistance/ Tolerance:</b>	Sifra has good resistance to Scab, medium resistance to Late blight and Early blight and resistant to wart disease and <i>Globodera rostochiensis</i> .
<b>Seed producer:</b>	Kisima Farm/ HZPC Holland B.V

# TAURUS



<b>Use:</b>	Crisps
<b>Areas to be grown:</b>	Suitable for all potato-growing areas
<b>Maturity:</b>	Medium (3-4 months)
<b>Yield Potential:</b>	Medium (30-40 tons/ha or 12.14-16.19 tons/acre)
<b>Tubers features:</b>	Round to round oval tubers Yellow, smooth skin Medium deep eyes Pale yellow flesh
<b>Tuber dormancy:</b>	Long (>2 Months)
<b>Dry matter:</b>	24%
<b>Plant description:</b>	Taurus is a medium to tall plant. It has an upright to semi upright stem and with medium to high frequency of flowers
<b>Disease resistance/Tolerance:</b>	Taurus has very good resistance against Virus Y <sup>n</sup> , good resistance against Tuber blight, moderately resistant to Leaf blight, Common scab, and resistant to Potato Cyst Nematode Ro1
<b>Seed producer:</b>	Kisima Farm/HZPC Holland B.V



<b>Use:</b>	Table variety Suitable for frozen Chips
<b>Areas to be grown:</b>	For all regions suitable for potato production.
<b>Maturity:</b>	Medium (3-4 months)
<b>Yield Potential:</b>	Medium to high (35-45 tons/ha or 14.16-18.21 tons/acre)
<b>Tubers features:</b>	Long-oval Smooth white skin Shallow eyes Pale yellow flesh
<b>Tuber dormancy:</b>	Long (2- 3 months)
<b>Dry Matter:</b>	21.4%
<b>Plant description:</b>	Tigoni is an erect tall variety (about 1 metre in height) with strong stems and light green broad leaves. It flowers profusely and the flowers are white.
<b>Disease resistance/Tolerance:</b>	Tigoni is moderately tolerant to Late blight and extremely resistant to potato Virus X
<b>Seed producer:</b>	Mainly produced by ADC-Molo, KALRO-Tigoni



<b>Use:</b>	Table variety, Chips Good chips quality combining flavor, texture, and appearance.
<b>Areas to be grown:</b>	Versatile variety recommended to all regions suitable for potato production. It also does well in non-traditional potato-growing areas like Kwale, Machakos, Kirinyaga, Embu, Lower Nyeri, Bungoma, Kisii and Transmara
<b>Maturity:</b>	Early (2.5- 3.5 months)
<b>Yield Potential:</b>	High (>45 tons/ha or >18 tons/acre)
<b>Tuber features:</b>	Oblong tubers Red Skin Shallow eyes Cream Flesh
<b>Tuber dormancy:</b>	Long (2.5-3.5 months)
<b>Dry Matter:</b>	21%
<b>Plant description:</b>	Unica is a medium tall variety with strong semi-erect stems and dark green medium-sized leaves. It flowers profusely and the flowers are pink.
<b>Disease resistance/ Tolerance:</b>	Unica is moderately resistant to Late blight, highly resistant to Potato Virus X (PVX) and resistant to Potato Leaf Roll Virus (PLRV) (and highly resistant to Potato Virus
<b>Seed producer:</b>	Mainly produced by ADC-Molo, GTIL (apical cuttings and Minutubers only) KALRO-Tigoni and Kisima Farm



<b>Use:</b>	Chips, Table variety
<b>Areas to be grown:</b>	Suitable for all potato-growing areas
<b>Maturity:</b>	Late (>4 months)
<b>Yield Potential:</b>	High (>40 tons/ha or >16.19 tons / acre)
<b>Tuber features:</b>	Large long oval tubers Bright, smooth yellow skin Shallow eyes Yellow flesh
<b>Tuber dormancy:</b>	Long (>2 Months)
<b>Dry Matter:</b>	21.1%
<b>Plant description:</b>	Voyager is a medium to tall plant .It flowers profusely and the flowers are white.
<b>Disease resistance/Tolerance:</b>	Voyager has good resistance to Scab, medium resistance to Late blight and Early blight, resistant to Wart disease and <i>Globodera rostochiensis</i> .
<b>Seed producer:</b>	Kisima Farm/HZPC Holland B.V

# WANJIKU

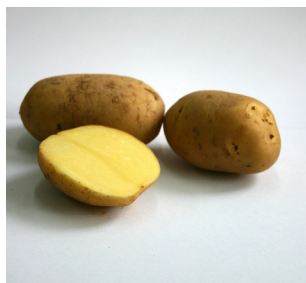


<b>Use:</b>	Table variety, Crisps
<b>Areas to be grown:</b>	For all regions suitable for potato production
<b>Maturity:</b>	Medium (3-4 months)
<b>Yield Potential:</b>	High (>40 tons/ha or >16.19 tons/acre)
<b>Tuber features:</b>	Oblong shaped, White cream skin Shallow pinkish eyes Cream flesh
<b>Tuber dormancy:</b>	Long (>3 Months)
<b>Dry Matter:</b>	21%
<b>Plant description:</b>	Wanjiku is a medium tall potato plant with strong semi erect stems and dark green medium size leaves with pinkish flowers.
<b>Disease Resistance/ Tolerance:</b>	Wanjiku is tolerant to Late blight, Potato Virus X & extremely tolerant to Potato Virus Y
<b>Seed producer:</b>	Mainly produced by ADC-Molo, KALRO-Tigoni





<b>Use:</b>	Table variety
<b>Areas to be grown:</b>	Suitable for all potato-growing areas
<b>Maturity:</b>	Medium (3 - 4 months)
<b>Yield Potential:</b>	High (>40 tons/ha or >16.19 tons/acre) under intensive management
<b>Tuber features:</b>	Big long oval in shape Yellow skin Very shallow eyes Light yellow flesh
<b>Tuber dormancy:</b>	Medium (1-2 Months)
<b>Dry Matter:</b>	17.9%
<b>Plant description:</b>	Zafira is a medium to tall variety and grows very fast. Leaves are medium to large and green in colour. It has high heat tolerance. Zafira is quite sensitive to harvest damage and bruising, needs hardening off for 3 weeks after dehauling and careful harvesting It is recommended to apply a short heat shock before planting. Desprouting once is optional. The best method to have a good tubers set is proper pre-sprouting after taking off the top sprout before planting.
<b>Disease resistance/ Tolerance:</b>	Zafira is resistant to PCN- Ro 1, and 4 and Common scab, quite resistant to Virus Y <sup>ntn</sup> and Virus Y <sup>n</sup> , susceptible to Late blight (foliage) and Late blight (tuber) and has Medium to high resistance to Potato Leaf Roll Virus
<b>Seed producer:</b>	Agrico East Africa



<b>Use:</b>	Table Variety
<b>Areas to be grown:</b>	For all regions suitable for potato production. Zarina is well adapted to (sub) tropical circumstances.
<b>Maturity:</b>	Early to medium (<3-4 Months)
<b>Yield Potential:</b>	High (50 ton/ha or 20.24 tons per/acre)
<b>Tuber features:</b>	Oval medium size tubers Bright and smooth skin Yellow flesh
<b>Tuber dormancy:</b>	Short (<1 Month)
<b>Dry Matter:</b>	I.N.A.
<b>Plant description:</b>	High, upright plant with medium to large leaves, quite light green. It flowers profusely and the flowers are white
<b>Disease resistance:</b>	High resistance to Late blight, good resistance to Common scab, resistant to Leaf Roll Virus and nematodes ( <i>Globodera rostochiensis</i> )
<b>Seed producer:</b>	Kisima Farm

## OTHER VARIETIES

No	Variety	Maintainer and Source	Maturity (Months)	Yield (Ton /ha)	Use/special attributes
1	Roslin Eburu	KALRO –Tigoni	4 - 4.8	25-35	Very good storability
2	Roslin Tana	KALRO –Tigoni	2 – 3	35-45	Good chipping quality
3	Kenya Dhamana	KALRO –Tigoni	2 – 3	35-45	Good mashing quality
5	Kenya Chaguo	KALRO –Tigoni	2 – 3	30-40	Good mashing quality

# Bayer Potatoes Crop Protection Program



Disease Name	Symptoms	Product	Rate per 20 Ltrs Water	DAY	Application Window
Weeds		sencor®	50ml	02	
Nematode: root node and Cyst nematode		VELUM® PRIME	7ml/20l Water-Drench	02	
Early Blight		Milraz®	40gms	02	x 2
Late Blight		INFINITO	35ml	02	x 1
Cut Worms		TIHAN® 10015	15ml	02	
WhiteFlies, Thrips and Aphids		TIHAN® 10015	7ml/20 l water	02	
Tuber Moth		TIHAN® 10015	15ml	02	
Foliar Fertilizer		WUXAL®	35 - 50ml	02	x 2



# VIAZI SOKO: A Digital marketing platform for seed and ware potatoes

## HOW TO REGISTER

1. Go to your mobile phone messaging service, type: NPCK #REGISTER#Your Name #Your County and send to **22384**  
EXAMPLE: **NPCK #REGISTER #ESTHER KAMAU #NAKURU**

Note:

- There is a space between NPCK and the first #.
- Use at least two of your names separated by a space.

Alternatively use the following in place of 'register' : REG, JOIN, JIUNGE ANDIKISHA, INGIA or SHIRIKI.

EXAMPLE:

**NPCK #ANDIKISHA #ESTHER KAMAU #NAKURU**

2. You will receive a feedback confirming your registration 'Welcome to NPCK SMS Services. Your account has been created'. If registration was not successful, you will receive an SMS with instructions on how to register

## HOW TO QUERY FOR SEED POTATO INFORMATION

1. Go to your mobile phone messaging service and type: NPCK seed potato variety and send to **22384**

EXAMPLE:

**NPCK #SEED #SHANGI** (Note there is no space between NPCK and the first #)

Alternatively you can use the following in place of **SEED**: **SEEDS, MBEGU, MBENGU, SEEDLINGS, POTATO, QUERY, TAFUTA and SEARCH**

EXAMPLE:

**NPCK #TAFUTA #SHANGI**

2. You will receive a reply that will include details of: Seed variety, if seed is certified or an alternative, seed size, amount available in Kgs, price per Kg, seed producing company, its contact number and County.

## HOW TO QUERY FOR MARKET PRICES

On your mobile phone messaging service;

Type **NPCK #PRICE** and send to the number **22384**

You will receive Information with market prices in all major towns in Kenya

**Note there is a space between NPCK and the first #**

## HOW TO MARKET WARE POTATO

To market through the platform a farmer should be in a group that has an MOU/AGREEMENT with NPCK. The group will have a farmer coordinator who will market on behalf of the members. However, farmers who attain a production of more than 10 tons per season can market individually through the system.

1. When a group member is about to harvest, the farmer coordinator will be responsible for uploading the required information as below; **NPCK #MARKET#POTATO VARIETY #PRICE PER KG#AVAILABLE KG# DAY#MONTH** send to **22384**

EXAMPLE:

**NPCK #MARKET#SHANGI#30#5000#15#5**

**Note: There is a space between NPCK and the first#.**

DAY means the harvesting date from 1st to 31st. Month means harvesting month from 1-12.

2. The coordinator will receive a reply that the group's stock record has been created and will be valid for a period of two weeks. This record is made available to registered potato buyers on the Viazi soko platform who can then place an order for the potatoes.
3. Upon an order placement, the coordinator collects potatoes from the selling members and updates the quantities and prices per Kg in the connected farmer software. The members involved will receive a digital receipt with transaction details and there after M-pesa payment.

For more details on requirements and procedure contact NPCK marketing department through

**Phone: 0799739578/0712338633**

**Email: [npck@npck.org](mailto:npck@npck.org)**



## NPCK GOLD MEMBERS



TOYOTA TSUSHO FERTILIZER  
AFRICA LTD



Pieper Farms LLC



# For Your Comprehensive Printing Solutions...



DIGITAL PROCESSING SYSTEMS

*Visit or Call us TODAY for unparalleled printing Solutions and related applications on our raft of Products & Services, which include:*

Brochures	Branding	Fliers
Magazines	Gift Items	Books
Catalogues	Graphic Design	Booklets
Visiting Cards	Security Documents	Note Books
Invitation Cards	Company Profiles	UV Lamination
Greeting Cards	Event Programs	Document Binding
Certificates	Year Planner	Annual Reports
Short Runs	Calendars	Banners
Posters	Diaries	Labels
Maps	Menus	Charts



*We are Conveniently Located*

Westlands Road, Soin Arcade First Floor, Suite No.20,  
PO Box 13690-00800 Nairobi Tel. +20 4440961/2, 0716 401537,  
Email: [info@dpskenya.com](mailto:info@dpskenya.com); [sales@dpskenya.com](mailto:sales@dpskenya.com)  
Web: [www.dpskenya.com](http://www.dpskenya.com)

---

For further information, please contact the following

## **NPCK**

Tel: 0799739578

Cell: 0712338633

Email: [npck@npck.org](mailto:npck@npck.org)

Website: [www.npck.org](http://www.npck.org)

SMS-Service 22384

## **KEPHIS**

Tel: 020 3597201/2/3

Cell: 0722516221

Email: [kephisinfo@kephis.org](mailto:kephisinfo@kephis.org)

Website: [www.kephis.org](http://www.kephis.org)

SMS-Service: 5354

## **KALRO-Tigoni**

Tel: 020 2076915

Cell: 0727031783

Email: [kalro.tigoni@kalro.org](mailto:kalro.tigoni@kalro.org)

Website: [www.kalro.org](http://www.kalro.org)

## **The following are acknowledged for the images used in this catalogue:**

Agricultural Development Center-Molo

Agrico East Africa

International Potato Center (CIP) Danespo

Den-hartigh

Europlant Aardappel B.V.

HZPC (Hettema- ZPC)

C. Meijer B.V.

Stet Holland B.V.

Kenya Agricultural and Livestock Research Organization-Tigoni

Kisima farm

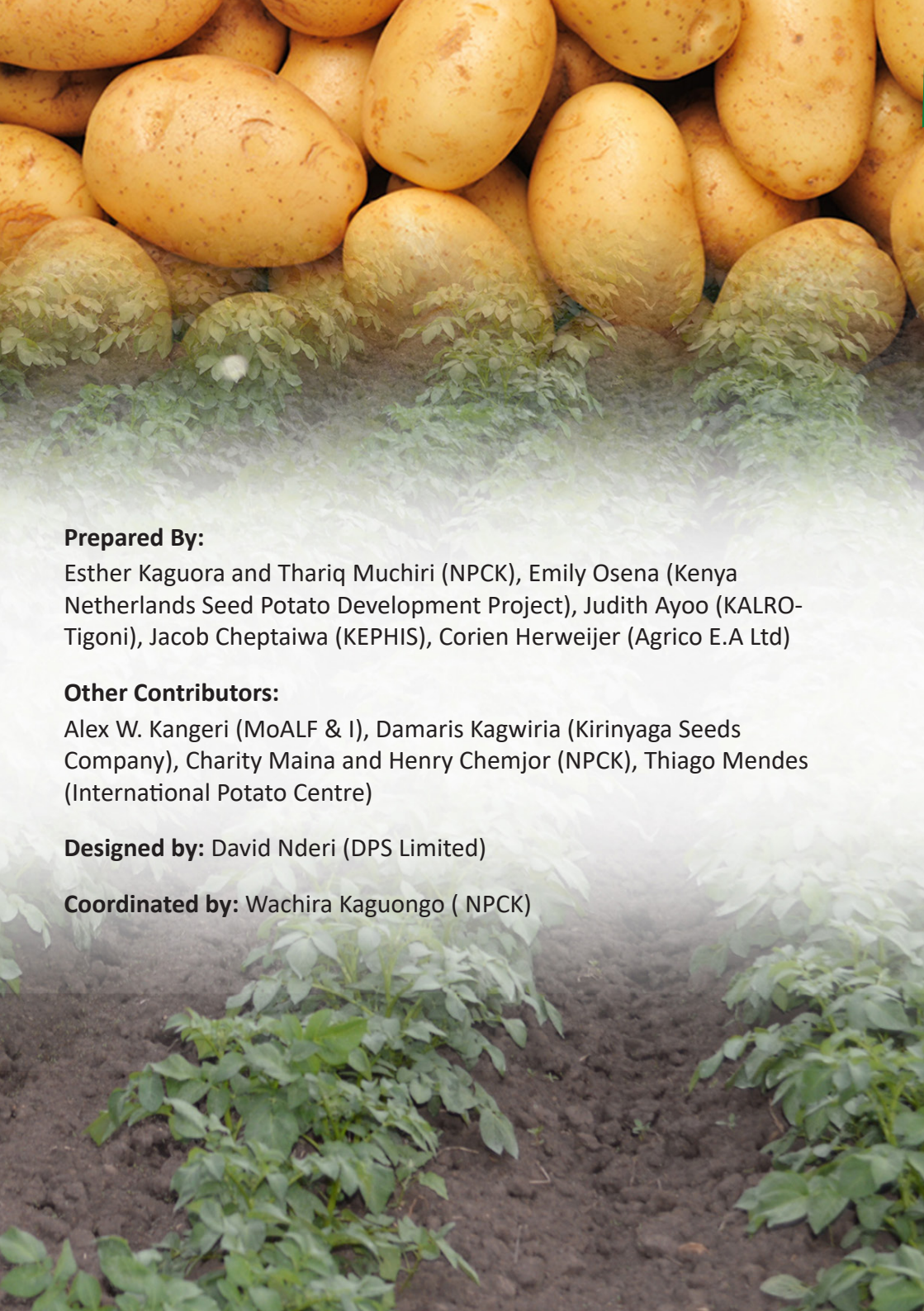


Kisima Farm Ltd seed potatoes are Kenya's best brand of seed potatoes

We supply high quality, certified seed potatoes that a farmer can expect increased yields.

For more information, call us on our hotline  
0716968766/ 0722509830





**Prepared By:**

Esther Kaguora and Thariq Muchiri (NPCK), Emily Osen (Kenya Netherlands Seed Potato Development Project), Judith Ayoo (KALRO-Tigoni), Jacob Cheptaiwa (KEPHIS), Corien Herweijer (Agrico E.A Ltd)

**Other Contributors:**

Alex W. Kangeri (MoALF & I), Damaris Kagwiria (Kirinyaga Seeds Company), Charity Maina and Henry Chemjor (NPCK), Thiago Mendes (International Potato Centre)

**Designed by:** David Nderi (DPS Limited)

**Coordinated by:** Wachira Kaguongo ( NPCK)